

International Summer School for Advanced Studies UniBS:

CONTEMPORARY IDENTITIES

Interweaving spaces and relations in the design of living services



Claire Fontaine, *Foreigners Everywhere* (Trondheim), 2016

Fifteen neon signs for wall, window or ceiling mounting, electronic transformers, cables and framework. Dimensions variable



UNIVERSITÀ
DEGLI STUDI
DI BRESCIA

BRESCIA, September 3 – 8, 2018



CONTEMPORARY IDENTITIES

Interweaving spaces and relations in the design of living services

Directors

Angelo Luigi Camillo Ciribini, Barbara Badiani, Barbara Angi

Scientific Committee

Prof. Maurizio Tira (Chancellor Unibs)

Prof.ssa Marina Montuori (Unibs)

Prof.ssa Michela Tiboni (Unibs)

Prof.ssa Michèle Pezzagno (Unibs)

Prof. Randy Deutsch (University of Illinois, USA)

Prof. Juan Manuel Palerm Salazar (Universidad de Las Palmas de Gran Canaria, ES)

Prof. Ioanni Delsante (University of Huddersfield, UK)

Dott. Renato Marmori (Unibs)

Arch. PhD Massimiliano Botti (Unibs)

Ing. Marco Caffi (Unibs)

Arch. PhD Alberto Soci (Unibs)

Arch. PhD Lavinia Chiara Tagliabue (Unibs)

Ing. Silvia Mastrolemba Ventura (PoliMi)



Interweaving spaces and relations in the design of living services

LOCATION: HISTORICAL CENTER





Interweaving spaces and relations in the design of living services SUBJECT

MARLEGNO®





Interweaving spaces and relations in the design of living services

QUESTIONS

- How can an **AUTONOMOUS, FLEXIBLE AND TRANSPORTABLE** housing module be envisaged in an **URBAN PLAN**?
- How can an autonomous, flexible and transportable housing module **CHANGE THE URBAN PLANNING PARADIGM** as a system for controlling the physical city and building the public city?
- How can a constructive system conceived through the **DESIGN FOR MANUFACTURE AND ASSEMBLY** evolve in **OPERATIONAL** terms (**KNOWLEDGE OR DISCOVERY OF AN ARCHITECTURAL OBJECT**)?
- How can the concept of constructive **MODULARITY** become the pretext for the rediscovery of architectural principles aimed at achieving the **"HUMAN DIMENSION"**?
- How can the concept of **TRANSPORTABILITY** guarantee a **HIGH ARCHITECTURAL AND PERFORMANCE QUALITY** of the buildings?



Interweaving spaces and relations in the design of living services

APPROACH

MULTIDISCIPLINARY

URBAN PLANNING +

BUILDING PRODUCTION +

ARCHITECTURE



Interweaving spaces and relations in the design of living services

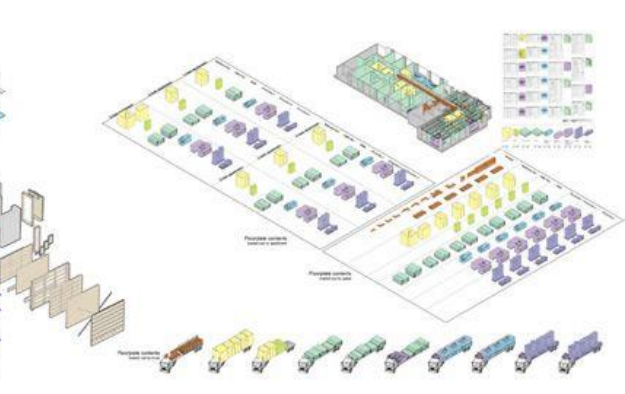
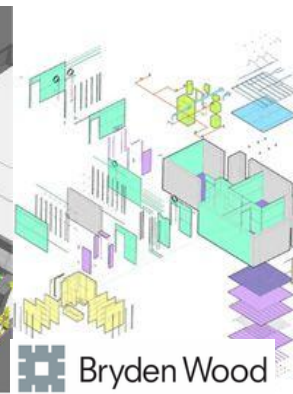
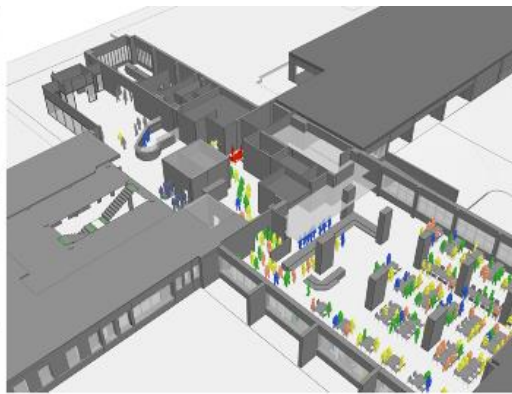
CONTEXT

- **HISTORICAL CONTEXT**, Piazza Rovetta (BS)
- **CONTEXT WITH LANDSCAPE VALUE**, Lago d'Iseo
- **URBAN SPRAWL**, Villaggi Marcolini (BS)
- **POST-INDUSTRIAL CONTEXT**, Via Milano (BS)
- **REDEVELOPMENT OF THE EXISTING BUILDING STOCK**, Via Livorno (BS)
- **TOURIST CONTEXT**, Ponte di Legno (BS)

Interweaving spaces and relations in the design of living services

KEYWORDS

- **OFF-SITE DESIGN FOR MANUFACTURING & ASSEMBLY**
- **URBAN PLANNING FOR TRANSPORTABLE MODULES**
- **ARCHITECTURAL PARADIGMS OF MODULARITY AND FLEXIBILITY**
- **BIM AND DIGITAL INNOVATION**





Interweaving spaces and relations in the design of living services

GOALS

