

Sports Boulevard

Riyadh's Four Wellbeing Projects..
Enhancing Life

Facts & Figures • Images

Facts and Figures

Location:

The Sports Boulevard reaches over 135 km between Hanifa Valley and Al Sulai Valley; it offers sports, artistic, cultural, recreational and environmental activities, with the following infrastructure:

- 85 km of biking trails for amateurs.
- 135 km of biking trails for professionals.
- 123 km of horse-riding trails.
- Safe and wooded walking trails around the whole project.
- Stops and rest areas for bikers in Hanifa Valley and Al Sulai Valley, including bike repair sites, cafes, and stores for both hikers and sports enthusiasts.
- 3.5 million m² of green areas and open spaces.
- 120,000 new trees to be planted and irrigated solely with treated wastewater.
- Monuments and iconic art works, including 10 major monuments, to be installed along the Boulevard.

The Boulevard has 8 main zones:

1- Hanifa Valley Route

- The Boulevard extends over 30 km along Hanifa Valley, from Al Olab Water Dam in Diriyah in the north, to Al-Madinah Al Munawwarah Road, in the south.
- It offers biking trails for amateurs and professionals alike, as well as wooded trails for walking and riding.
- It is connected to the Biking Training Center next to the Diplomatic Quarter.
- It has 13 stops along the valley, including bike repair sites, cafes and stores for hikers and sports enthusiasts.

2- The Arts Zone:

- The Boulevard extends over 3 km east of King Khaled Road and offers cultural, artistic and recreational activities.
- It offers walking, biking and riding trails as well as stops for hikers.
- It has centers, museums, offices, studios and exhibition space, art fora, lecture rooms, as well as potential investment areas.

3- Al Aysen Valley:

- It extends over 3.5 km along Al Aysen Valley, from Suwaid bin Harthah Road to the west of King Fahd Road.
- A shallow water canal cuts the area in two.
- It offers walking and biking trails, stops for hikers, as well as potential investment areas.
- It is connected to a higher path leading to King Abdullah Financial District.

4- Recreational Zone

- It extends over 4 km from the east of King Fahd Road until Othman bin Affan Road.
- It offers a 40 km overpass to professional bikers and a land trail for amateurs.
- It has an auditorium, and a theater and cinema complex, as well as an outdoor cinema.
- It also has a site for events and interactive sound and light shows.
- It offers playgrounds and parks with artificial hills, as well as open spaces cooled with water mist.
- Finally, it includes a group of residential and office buildings, in addition to potential investment areas.

5- Sports Zone

- It extends over 5 km from the east of Othman bin Affan Road to the east of the Airport Road.
- It has 60 activity venues, including 16 soccer fields, 18 indoor and 12 outdoor basket, volleyball and tennis courts, and one ice rink.
- The area is connected to a trail surrounding Princess Nourah bint Abdulrahman University.

Sports Tower:

- In the sports area, some venues are dedicated to men, others to women.
- Venues to practice a host of activities, such as running, golfing, boxing, basketball, tennis, badminton, swimming, water-polo, climbing, shooting, ice-hockey and others.
- A velodrome is on the lower level.
- Next to the tower, an underground velodrome is dedicated to bike races.

6- Ecological Area:

- It extends over 14 km from the east of the Airport Road to Al Janadriyah Road at Al Sulai Valley.
- It offers a high trail for professional bikers and a land trail for amateurs, as well as stops and rest areas.
- It includes areas where plant cultivation and conservation are taught.
- It offers leisure areas, and walking and running trails connected to local neighborhoods.
- Specialized education and culture sites teach environmental sustainability in urban contexts.
- It includes fields and greenhouses to develop seeds and agricultural produce and the production of organic foods.
- It also includes residential buildings, marketplaces, cafes and res-taurants.

7- Al Sulai Valley Zone

- It extends over 53 km along Al Sulai Valley from King Fahd International Stadium to Binban Park.
- It offers trails for professional bikers and horse riders as well as wooded walking trails.
- It has 15 stops along the valley, including bike repair sites, cafes and shops for hikers and sports people.
- It includes areas for wilderness rides and camping.

8- Sand Dunes Park Zone

- With a surface of 20 km², the park is located in the sandy area southeast of King Fahd International Airport.
- It offers trails for professional mountain and desert biking.
- It includes an equestrian center and horse-riding grounds fields extending up to one million m².
- It includes a visitors' center, stops, rest areas and centers for bikers.
- It has a hospitality complex and various residential facilities.
- It includes botanical gardens and a 5 km² zoo.
- Its distinctive landmark will be a monument made of curved cycling tracks in the shape of a flower, gradually rising 50 meters above ground, to allow cyclists to enjoy the impressive view from the top.

General Facilities and Services:

- The Sports Boulevard offers a variety of facilities and services, including modern mosques as well as security, health, educational and social centers, and parking lots in all areas.

Public Transportation:

- The Sports Boulevard is connected by 4 metro stations, including King Abdulaziz Financial District Station.
- The Sports Boulevard is also connected by 3 metro lines: Yellow, Purple and Blue.

Investment Opportunities:

- The Sports Boulevard offers investors one million m² of land to be developed in a variety of sectors.

General Implementation:

- Project design and study is being finalized.
- Project implementation is expected to start in the second half of 2019.
- Project completion is expected in 2027.

Images



Equestrian route in wadi Hanifa



Professional cyclists bridge



Shaded cycle bridge



مترو
الرياض
metro riadh

مترو
الرياض
metro riadh

Cycle cross route



Water canal and footpaths



Water canal and footpaths



Moveable Bridge



Moveable Bridge



Riyadh Amphitheater



Riyadh Amphitheater



Riyadh Amphitheater



Riyadh Amphitheater



Sports Tower



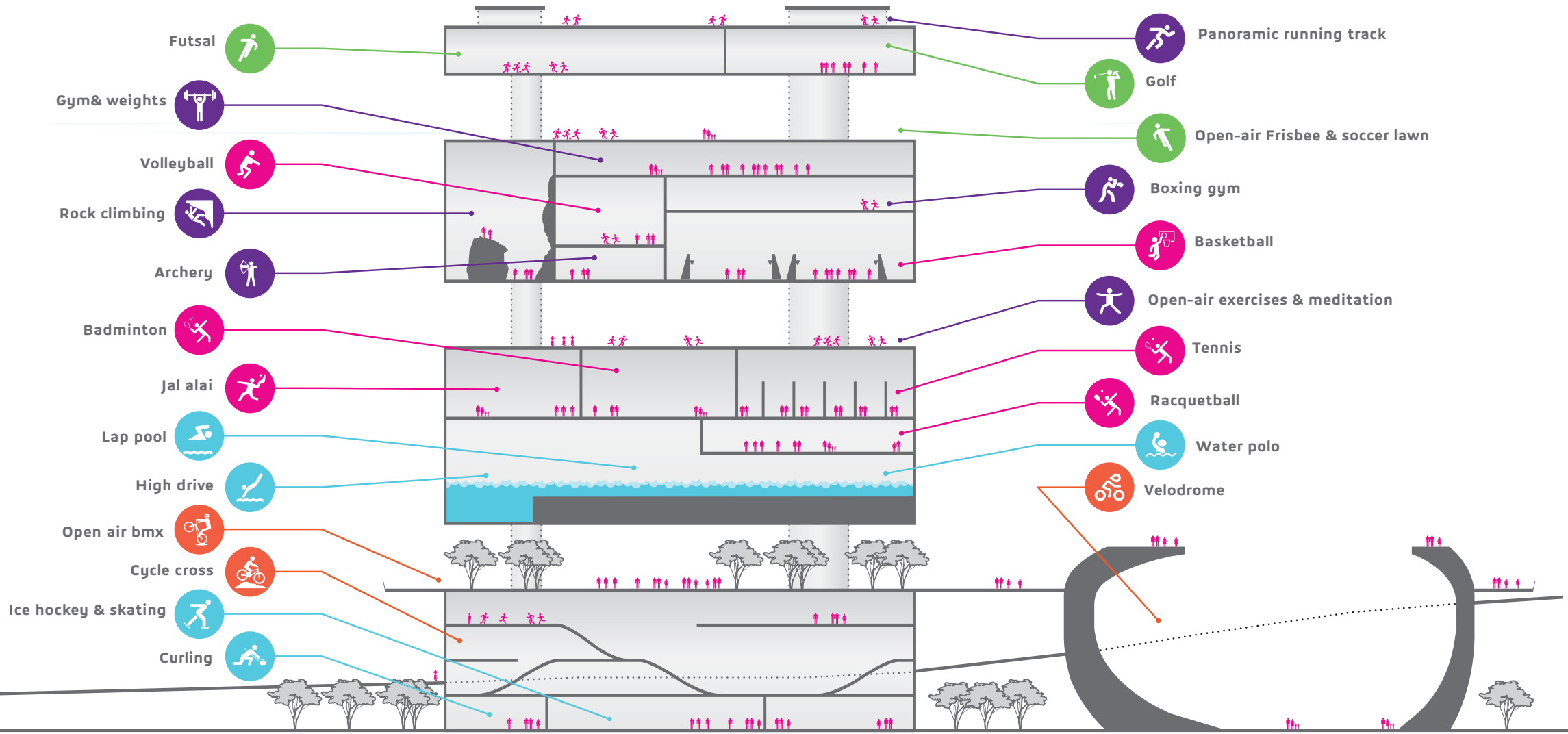
Sports Tower



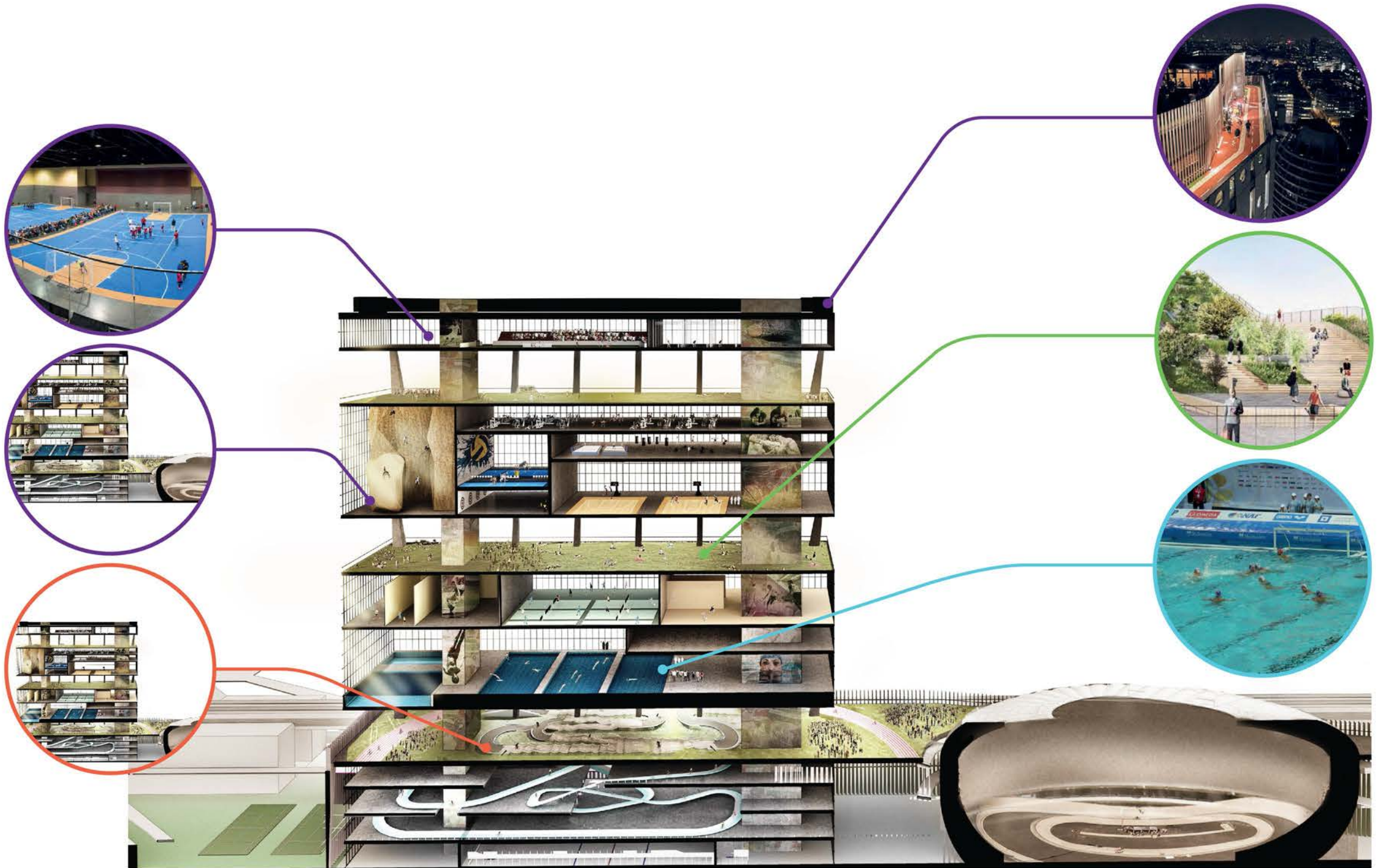
Sports Tower



Sports Tower



Sports Tower



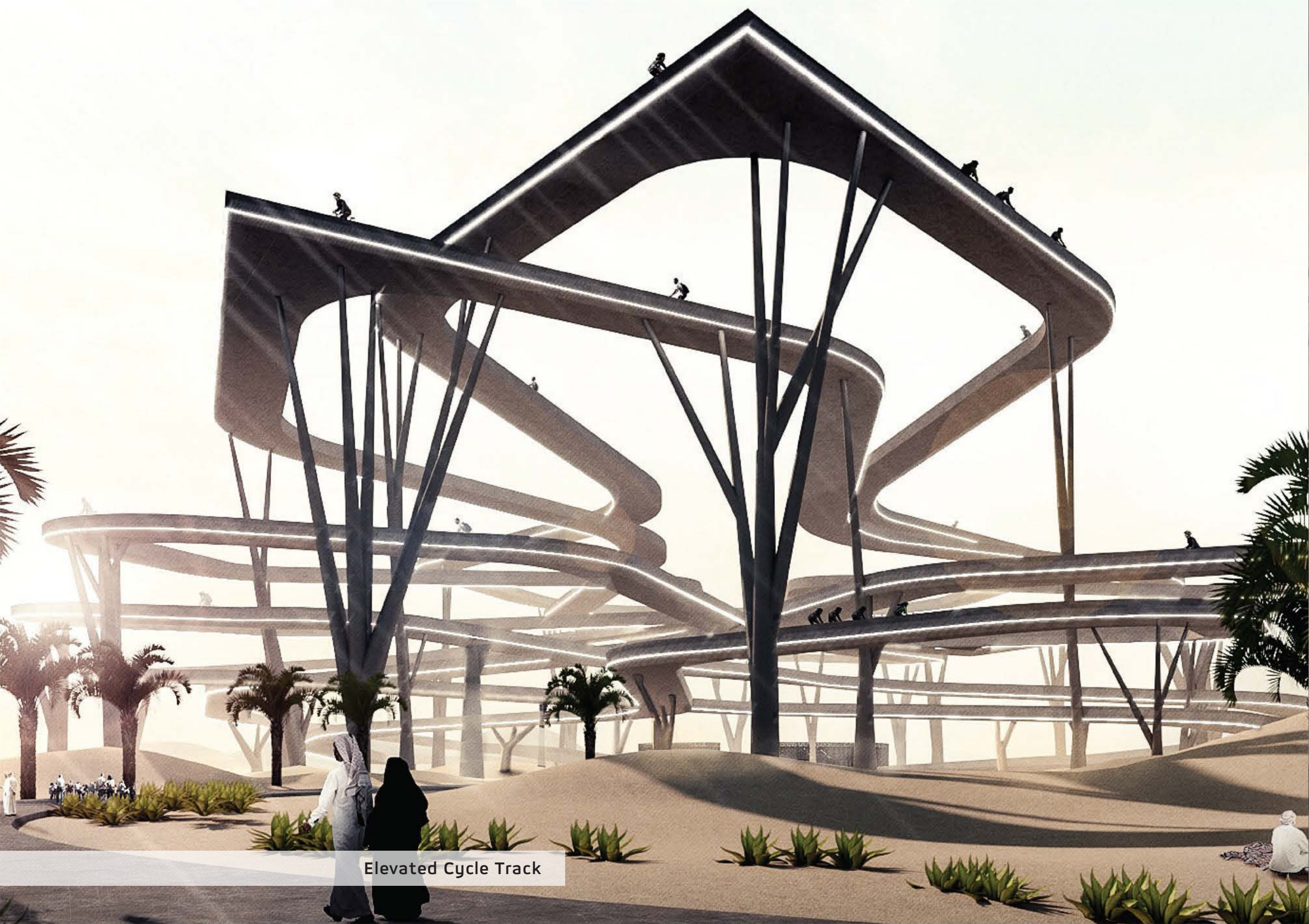
Sports Tower



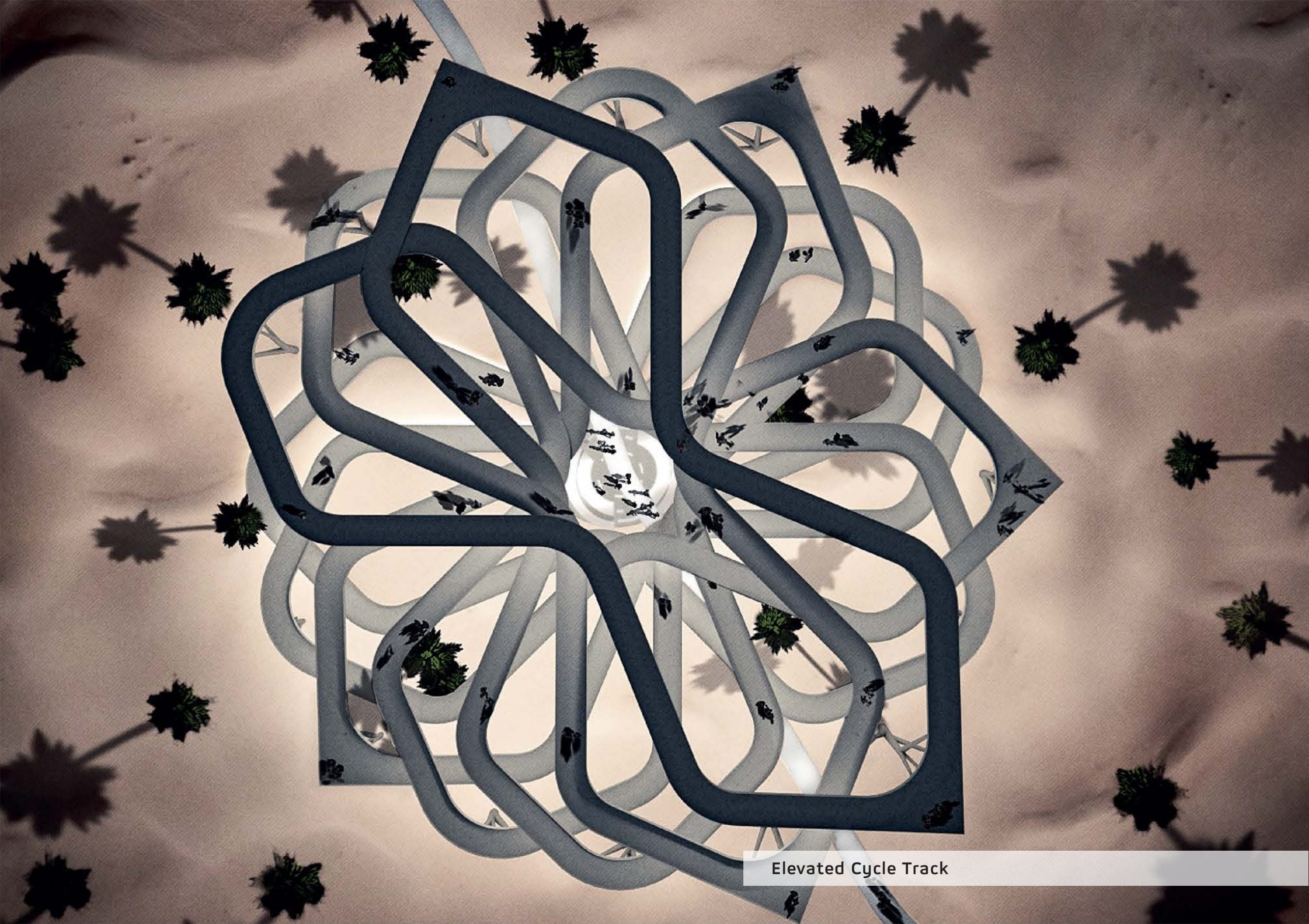
Open area in Eco Village



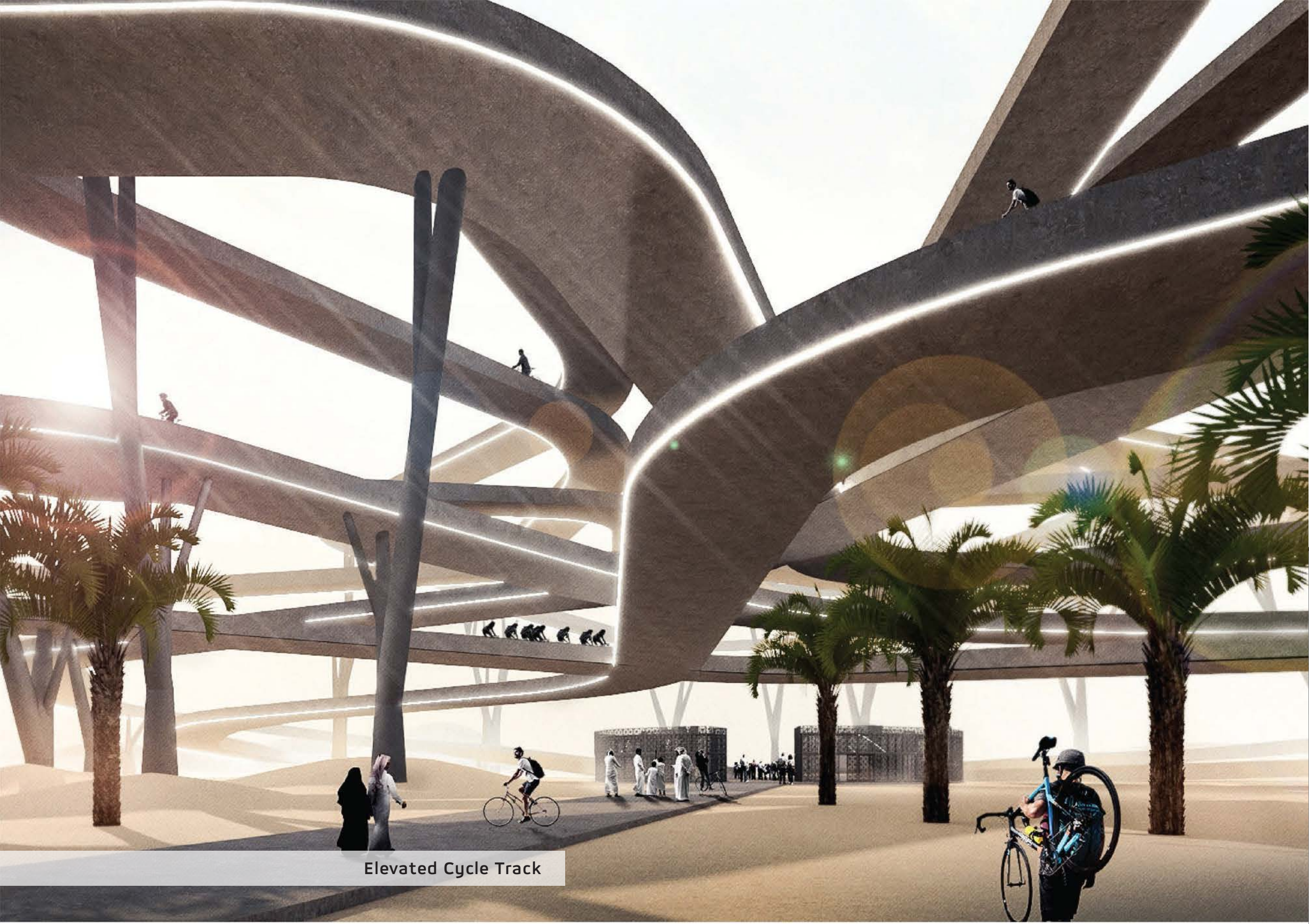
Open area in Eco Village



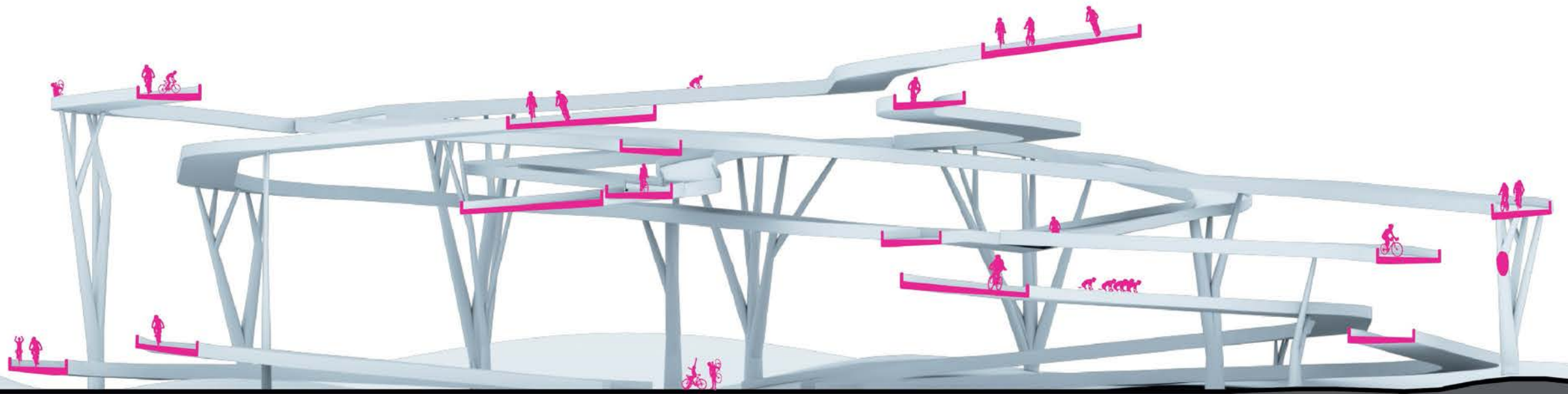
Elevated Cycle Track



Elevated Cycle Track



Elevated Cycle Track



Elevated Cycle Track



Sports Route From Western Side



www.RiyadhAlmasar.sa  [@RiyadhAlmasar](https://twitter.com/RiyadhAlmasar)